



Scratch Removal System

Part Number 39071

For Use with a Household Drill (1200-1600 rpm)

Kit Includes:

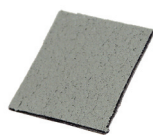
- 1 – Disc Pad Holder
- 1 – 3000 Grit Abrasive Square
- 1 – Purple Compounding Pad
- 1 – Black Polishing Pad
- 1 – 3M™ Rubbing Compound, 1 oz
- 1 – 3M™ Scratch Remover, 1 oz
- Step-by-step directions for use

You Supply:

- 1 – Standard Household Drill (1200–1600 rpm)
- 1 – 3M™ Microfiber Detail Cloth
- Spray bottle and water
- Paper towels

Instructional video on www.3MCarCare.com

Kit Contents:



3000 Grit Abrasive Square



Disc Pad Holder



Purple Compounding Pad



3M™ Rubbing Compound, 1 oz



Black Polishing Pad



3M™ Scratch Remover, 1 oz

WARNING! COMBUSTIBLE LIQUID AND VAPOR. May cause eye, skin, nose and throat irritation and cause dizziness, headache or nausea. Contains a chemical(s) which can cause cancer.

PRECAUTIONS: Keep away from heat and flame. Avoid eye and skin contact. Avoid breathing dust or vapors. Use only with adequate ventilation. Do not swallow. Wash thoroughly after handling.

KEEP OUT OF REACH OF CHILDREN.

FIRST AID INFORMATION: Eye & Skin Contact: Flush eyes and/or skin with large amounts of water. If signs/symptoms persist, get medical attention. **Inhalation:** Remove person to fresh air. If signs/symptoms develop, get medical attention. **If Swallowed:** Do not induce vomiting. Get medical attention.

WARNING



For applications that could create airborne dust, provide appropriate exhaust or dust capture. Wear an appropriate Government-approved respirator to help reduce contaminant exposures. Excessive inhalation of certain dust particles can cause serious injury.



Protective eyewear recommended when using this product.

ABOUT AUTOMOTIVE PAINT AND SCRATCHES

When a vehicle is manufactured, primer, colored paint, and a final clear coat are applied to the vehicle (see Illustration 1). The 3M™ Scratch Removal System is designed to remove defects to the clear coat. Examples include fine scratches from automatic car wash brushes. Common areas in need of repair are the area around the door handle or the trunk.

Scratches that can be removed are in the surface of the clear coat.



Illustration 1

When removing a defect in the paint surface, you are actually removing a very thin layer of the clear coat paint. This procedure is commonly performed by professional technicians in automotive collision shops, car dealerships, detail shops, and assembly plants.

The 3M™ Scratch Removal System improves a vehicle's appearance by sanding, compounding and polishing the clear coat. After using the 3M™ Scratch Removal System the defect may still be visible. Often, the best way to make a repair completely invisible is to have the entire panel repaired by a professional.

The 3M™ Scratch Removal System will not eliminate deep or wide scratches or scratches that go through the clear coat (see Illustration 2). Some deep scratches, acid rain pits, or other types of paint defects may not be able to be removed without repainting a portion of the vehicle.

Scratches that cannot be completely removed go deeper than the surface of the clear coat.

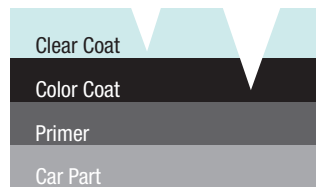


Illustration 2

Excessive sanding and/or compounding can remove or cut through the clear coat layer and into the color coat layer. If the clear coat layer is removed, it requires repainting by a professional to properly repair.

CONSIDER THE CONDITION OF YOUR PAINT

To determine if you should use the 3M™ Scratch Removal System, run your fingernail over the scratch. If you can feel the scratch, but your fingernail does NOT catch, we recommend using the 3M™ Scratch Removal System. If your fingernail catches on the scratch or if you can see metal, follow manufacturers' repair procedure or see a professional technician.

PREPARE THE SURFACE

1. Clean the surface of the area to be repaired with car wash soap and water. Dry completely with a clean, dry cloth. When working around door handles, mirrors, bumpers, molding, decals, and adjacent panels, protect from potential damage with 3M™ Performance Masking Tape.



SAND AND REDUCE THE SCRATCH

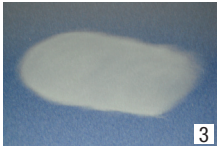
2. Spray water on the repair area and the 3000 grit abrasive square.



Use the abrasive square to sand the immediate area of the scratch. Confine sanding to a 4" x 4" area around the scratch. Gently sand the scratch area by hand with light-to-medium pressure using the grey/green side of the abrasive square.



While sanding, a white slurry or light foam will appear. This indicates the abrasive is reducing the scratch.



3. Frequently wipe the sanded area with a paper towel to determine if the scratch has been removed, approximately once every 10 seconds of sanding. If the scratch is still visible, spray the area and abrasive square with water again and continue sanding.

The area being sanded will become dull during the sanding process. The gloss will be restored during the compounding and polishing steps.

4. Observe the scratch area from multiple angles to ensure the original scratch has been removed completely. Once the scratch is no longer visible, wipe the area with a clean, dry towel and move on to the compounding step.

COMPOUND AND REFINE THE SCRATCH

COMPOUNDING TIP: DO NOT run the foam pad without rubbing compound. DO NOT hold the drill in one place while compounding; this will cause excessive heat that will lead to product smearing, handling issues and paint damage.



5. With the power plug disconnected, mount the disc pad holder into a standard household drill.



Attach and center the purple compounding pad to the disc pad holder. Place a quarter-sized amount of the 3M™ Rubbing Compound onto the purple pad.



Before turning the drill on, smear the rubbing compound with the purple pad over the sanded area. This will reduce splatter.

Caution: Use care around door handles, mirrors, bumpers, and adjacent panels. The side of the disc pad holder and the edge of the loop material on the purple pad can scratch or cause damage to paint.

6. Buff area sanded in previous step. Extend beyond repair by approximately the width of the purple pad. This will ensure all scratches are removed from the surface.

Buff area using light-to-medium pressure at a comfortable drill speed, using only enough pressure to compress surface of waffle pad. While buffing, hold the purple pad flat against the surface and buff using up/down and side-to-side motions to ensure all sanded areas are compounded.

Reduce pressure as compound dries and the shine is partially restored. Repeat application if any scratches or hazy/dull areas are still visible.

7. Remove any remaining rubbing compound from the surface with a clean, dry cloth before moving to the polishing step. If any rubbing compound sticks or smears on the surface, spray with water and wipe with a clean, dry cloth. Purple pad can be rinsed out with water and saved for future use.

POLISH AND RESTORE SHINE

POLISHING TIP: DO NOT run the foam pad without polish. DO NOT hold the drill in one place while polishing; this will cause excessive heat that will lead to smearing and handling issues.



8. Remove the purple pad and replace it with the black polishing pad. Place a quarter sized amount of 3M™ Scratch Remover onto the black pad.



Before turning the drill on, smear the polish with the black pad over the repair area. This will reduce splatter.

Caution: Use care around door handles, mirrors, bumpers, and adjacent panels. The side of the disc pad holder and the edge of the loop material on the black pad can scratch or cause damage to paint.

9. Polish area compounded in previous step. Extend beyond repair area by approximately the width of the black pad. This will ensure all scratches are removed from the surface.

Polish area using light-to-medium pressure at a comfortable drill speed, using only enough pressure to compress surface of waffle pad. While polishing, hold the black pad flat against the surface and polish using up/ down and side-to-side motions to ensure all compounded areas are polished.

Reduce pressure as polish dries and the desired shine is achieved. Repeat application if necessary. Buff area by hand with a clean, dry microfiber cloth to remove any remaining polish left on the surface. Black pad can be rinsed out with water and saved for future use.

PROTECT THE REPAIRED AREA

For added protection, apply automotive wax to the repaired area and entire vehicle. For best results, 3M recommends using 3M™ Performance Finish Synthetic Wax (PN 39030).

Product Use: Many factors beyond 3M's control and uniquely within user's knowledge and control can affect the use and performance of a 3M product in a particular application. Given the variety of factors that can affect the use and performance of a 3M product, user is solely responsible for evaluating the 3M product and determining whether it is fit for a particular purpose and suitable for user's method of application.

Warranty, Limited Remedy, and Disclaimer: Unless an additional warranty is specifically stated on the applicable 3M product packaging or product literature, 3M warrants that each 3M product meets the applicable 3M product specification at the time 3M ships the product. 3M MAKES NO OTHER WARRANTIES OR CONDITIONS, EXPRESS OR IMPLIED, INCLUDING, BUT NOT LIMITED TO, ANY IMPLIED WARRANTY OR CONDITION OF MERCHANTABILITY OR FITNESS FOR A PARTICULAR PURPOSE OR ANY IMPLIED WARRANTY OR CONDITION ARISING OUT OF A COURSE OF DEALING, CUSTOM OR USAGE OF TRADE. If the 3M product does not conform to this warranty, then the sole and exclusive remedy is, at 3M's option, replacement of the 3M product or refund of the purchase price.

Limitation of Liability: Except where prohibited by law, 3M will not be liable for any loss or damage arising from the 3M product, whether direct, indirect, special, incidental or consequential, regardless of the legal theory asserted, including warranty, contract, negligence or strict liability.

Additional Product Safety and Health Information Source:

Material Safety Data Sheet or

3M Automotive Aftermarket Division

3M Center/Bldg. 223-6N-01

St. Paul, MN 55144-1000

1-877-MMM-CARS (666-2277) or 651-737-6501

www.3MCarCare.com

3M is a trademark of 3M Company.

Disc Pad Holder made in China. All other kit contents made in U.S.A with U.S. and globally sourced materials.